



The University of Mississippi

OFFICE OF INTERNATIONAL PROGRAMS

331 Martindale

University, MS 38677

Phone: (662) 915-7404 Fax: (662) 915-7486

oneworld@olemiss.edu

www.studyatusa.org

August 2002

Please find the Office of International Programs Annual Enrollment Report enclosed. It is my hope that you will find this report helpful in learning more about the make up of our international student community, including population figures, countries and regions of origin, undergraduate and graduate enrollment figures, gender classification, population trends (national vs. University of Mississippi), and a variety of other data that I hope will be informative and useful.

While the total international student population has fluctuated between 408 and 434 students in the past four years, after a steep decline in previous years *our international graduate student enrollment has risen from 247 to 294 students in the past four years*. Our most disturbing international enrollment trend has occurred at the undergraduate level, which has seen a drop from a high of 202 students in the 95-96 school year to 100 students in the 2001-2002 calendar year. It is hoped that consistent, long-term recruitment and increased financial incentives for undergraduate students will reverse this trend.

I would like to acknowledge the efforts of Charter Morris, OIP Administrative Coordinator, for compiling this year's data which is published in the Institute of International Education's, *Open Doors: Report on International Educational Exchange*.

Sincerely,

Michael Johansson, Director

I. Introduction

International student enrollment at the University of Mississippi for the fall semester of the 2001 year totaled 408 non-immigrant students, representing 70 countries. Of the 11,873 students enrolled at the university this semester, international students comprise approximately 3.4% of the total student body. The University of Mississippi also has an association with 54 internationals involved in optional practical training (OPT) and 1 involved in curricular practical training (CPT). Represented in the following charts, tables, and commentaries are data with regard to student enrollment, academic level, major, country and region of origin.

II. International Student Enrollment: The University of Mississippi vs. U.S. Institutions of Higher Education

During this past year, the number of international students attending colleges and universities in the United States increased by 6.4% over the previous year, to a record total of 547,867 students. The 6.4% increase is the largest single year jump in international enrollments seen during the past 20 years. This increase continues a trend observed since 1997, and underscores the fact that the U.S. is the destination of choice for students in much of the world.¹

The University has seen a slight drop in numbers from last year's 2.2% increase. From the Fall of 2000 to the Fall of 2001, international student enrollment decreased 3.8%. Table I shows the annual changes in the international student population at the University and the corresponding changes at the national level.

¹ IIE. Open Doors Press Conference. National Press Club Washington, DC. November 13, 2001. Todd Davis Address at the National Press Club. <http://www.opendoorsweb.org/>

International Student Enrollment & Annual Percent Change
Oxford Campus and National Levels

Table I

ACADEMIC YEAR	UNIVERSITY OF MISSISSIPPI	PERCENT CHANGE	NATION ²	PERCENT CHANGE
1993-1994	631	-0.8%	449,749	2.5%
1994-1995	561	-11.1%	452,653	0.6%
1995-1996	547	-2.5%	453,787	0.3%
1996-1997	546	-0.2%	457,984	0.9%
1997-1998	507 ³	-7.1%	481,280	5.1%
1998-1999	434	-14.4%	490,933	2.0%
1999-2000	415	-4.4%	514,723	4.8%
2000-2001	424	2.2%	547,867	6.4%
2001-2002	408	-3.8%	----- ⁴	-----

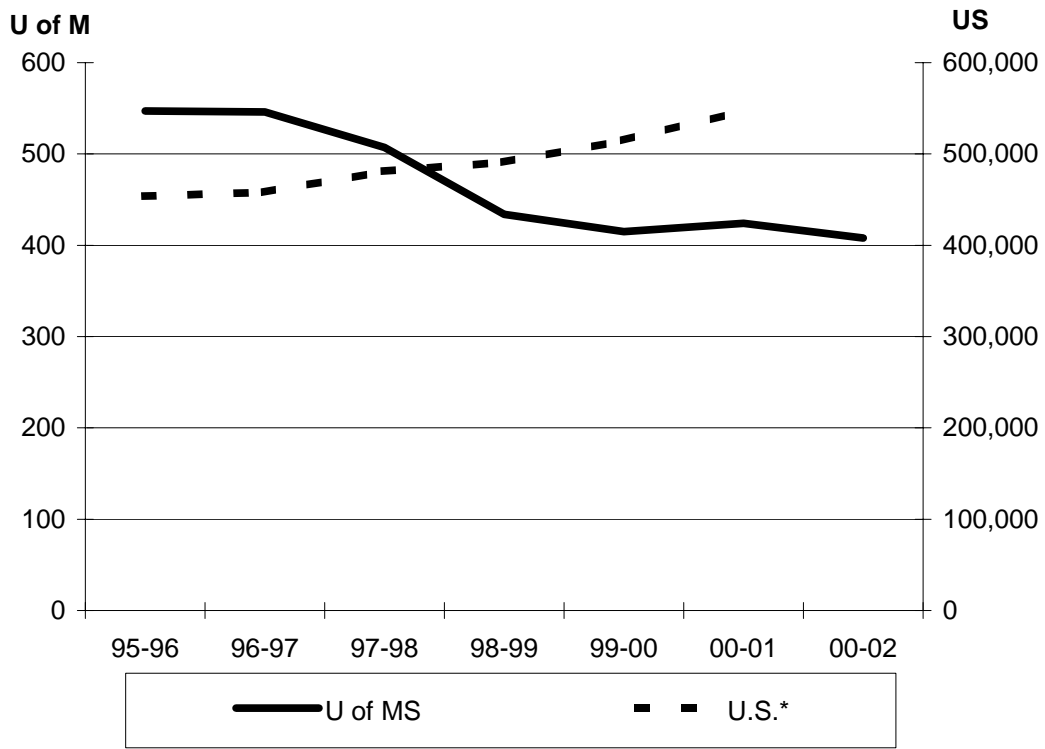
² IIE. Open Doors on the Web. <http://www.opendoorsweb.org/>

³ This enrollment figure and all subsequent figures included in this table are international students who are pursuing undergraduate and graduate degrees, exchange students, non-degree students, and those students enrolled in the Intensive English Program. Students who are permanent residents, asylees, and former students who are on practical training are not included after this figure.

⁴ The total number of international students enrolled in U.S. colleges and universities will not be calculated until the end of the 2001-2002 academic year.

University of Mississippi vs. U.S. Colleges and Universities A Seven Year Enrollment Comparison

Chart I



*U.S. Data for 01-02 not yet compiled

International Student Enrollment Factors

The downward trend in University of Mississippi international student enrollments began at least as early as the 1993-94 academic year, when enrollment records were first compiled. *While graduate enrollments are up, undergraduate enrollments continue to slide at the University of Mississippi, mirroring a national trend.*

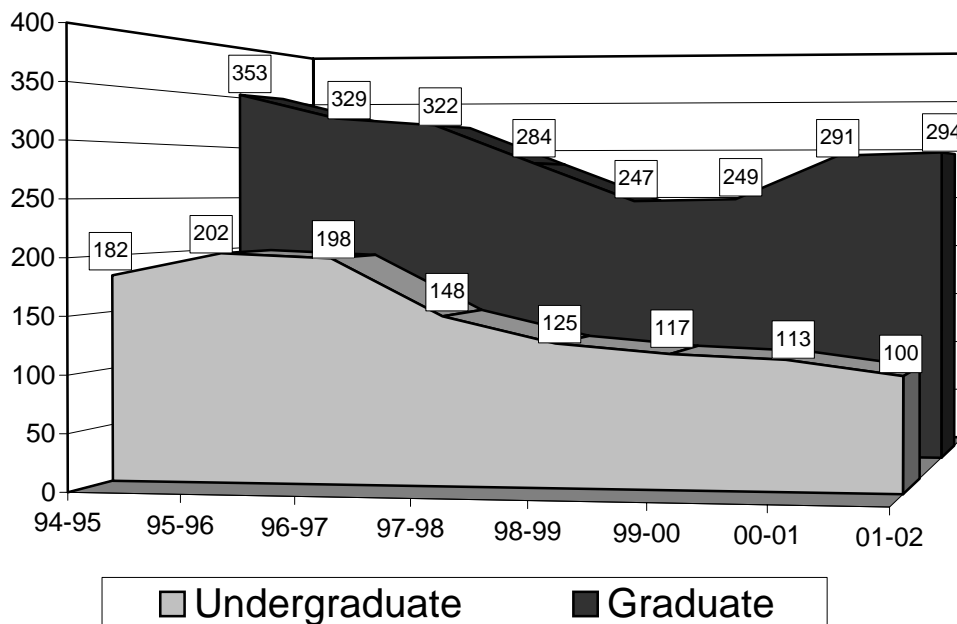
The drop in undergraduate students studying in the US can be attributed to several factors. Developing countries continue to expand educational opportunities for undergraduate students by building more institutions of higher learning that provide a low-cost alternative to studying abroad. The continued strength of the U.S.dollar has contributed to this phenomenon, and has been exacerbated by the weakening of the currencies of other nations competing for international students, such as Canada, Great Britain, and Australia. The aggressive recruitment of international students and the proximity of Australia to 70% of our international student market located in Asia has added to Australia's popularity as an international student destination. Finally, the Asian economic crisis that hit in 1997-98 had an adverse affect on U.S. enrollments forcing students in the afflicted countries to seek lower cost alternatives for their higher education needs.

The University of Mississippi is committed to expand its international student population through a long-term recruitment effort to enroll international students, particularly at the undergraduate level. Active recruitment for international students resumed in Asia in February 2001, Europe and the NIS in July 2001, and Latin America in Nov-Dec 2001. Already students have enrolled in the university as a result of this recruitment effort, most notably in the Intensive English Program in the summer of 2001, along with 6 students recruited from Konkuk University, Korea, who enrolled in the fall of 2001. Konkuk University and other institutions throughout the world are learning about the University of Mississippi and recommending our programs to their students. In addition, efforts have been stepped up to visit various international student sponsoring organizations located in the U.S., such as the Institute for International Exchange (IIE), to inform them of the academic opportunities available to international students at the University of Mississippi. Along with extensive choice in academic fields of study, the University of Mississippi offers international students reasonable tuition fees and a low cost of living allowing for a reasonable and attractive alternative to more costly academic institutions.

III. Academic Level

A. Undergraduate & Graduate Enrollment⁵

Chart II



Graduate Enrollments Up; Undergraduate Numbers Continue to Drop

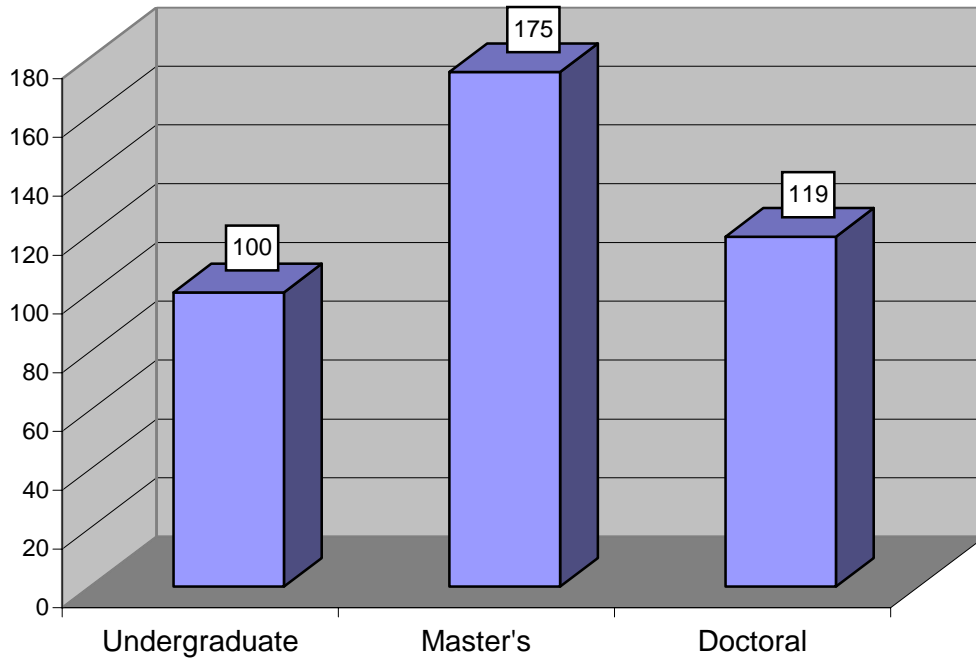
When looking at international student enrollments, it is important to distinguish between the undergraduate and graduate levels. While graduate enrollments have been on the rise since the 1999 academic year, undergraduate enrollments have dropped in half since the 1995 academic year.

The enrollment numbers depicted by this graph do not include the 14 IEP students or the 13 students that hold visas that classify them as permanent residents or asylees (visa types: PA, PR, RA). **Putting visa and classification technicalities aside, the international enrollment figure would be 421.**

⁵ Administrative Information Services

B. Undergraduate, Master's, and Doctoral Enrollment as of Fall 2001⁶

Chart III



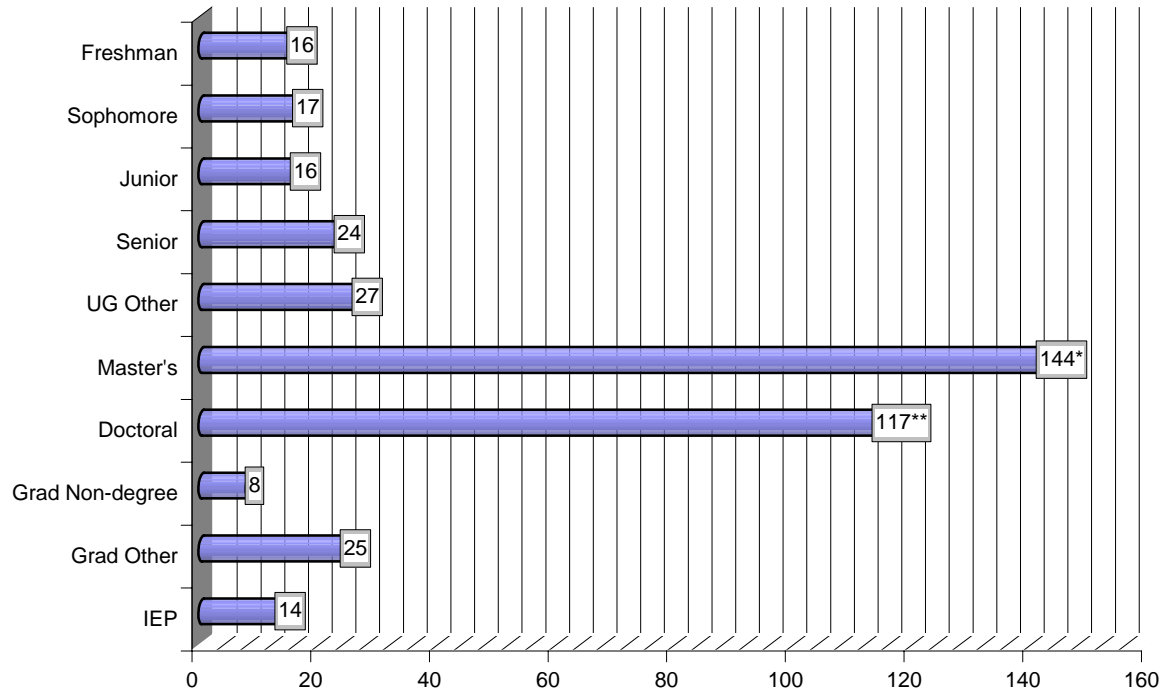
At 119, international students comprise 21.7% of the 549 students currently enrolled in Doctoral Programs at the University of Mississippi⁷. The Doctoral Degrees concerned in this figure are PH.D., ED.D., and D.A.

⁶ Administrative Information Services. Undergraduate numbers include Unclassified, Visiting, and Law classified students. Master's includes Conditional, Qualifying, Visiting, and Non-degree classified students. Doctoral includes Conditional classified students.

⁷ Doctoral Enrollment Data provided by the Registrar's Office.

C. International Population by Academic Level⁸

Chart IV



* Actual number of Master's students is 175, as shown on page 6, Chart III. The other 31 Master's students are represented in the categories Grad Non-degree and Grad Other.

** Actual number of Doctoral students is 119, as shown on page 6, Chart III. The other 2 Doctoral students are represented in the Grad Other category.

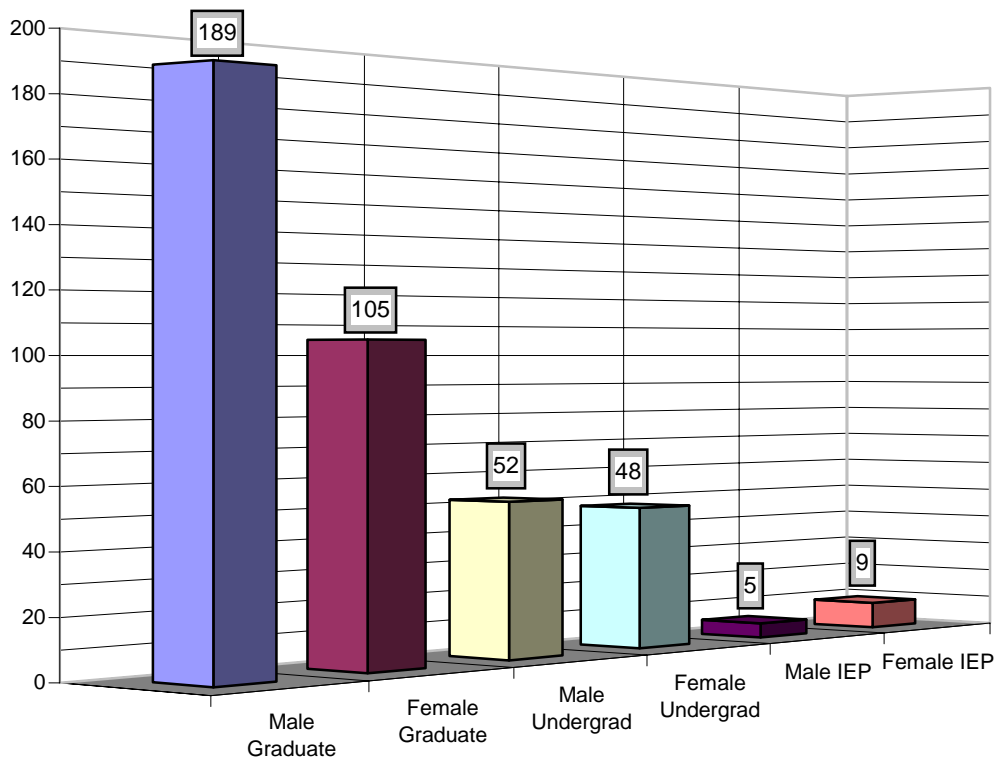
⁸ Administrative Information Services. *Undergrad Other* category includes visiting, unclassified, and law students. *Grad Other* category includes conditional, qualifying, and visiting students. *Grad Non-degree* category refers to students enrolled in the graduate school but have no intention to pursue a graduate degree program; Non-degree students are technically part of the Master's Programs.

IV. Enrollment by Gender

According to academic classification, male and female international student enrollment is recorded in Chart V.

International Academic Classification by Gender⁹

Chart V



Total International Male: 246
Total International Female: 162

V. International Enrollment by Fields of Study¹⁰

⁹ Administrative Information Services.

¹⁰ Administrative Information Services.

Table II

Fields of Study	International Student Enrollment
Accountancy	
Graduate	4
Undergraduate	2
Accountancy Non-Degree	
Graduate	1
Art	
Undergraduate	2
Banking and Finance	
Undergraduate	2
Banking Non-Degree	
Graduate	3
Biological Chemistry	
Undergraduate	1
Biological Sciences	
Graduate	9
Undergraduate	1
Biomedical Sciences	
Undergraduate	2
Business	
Undergraduate	5
Business Administration	
Graduate	41
Curriculum & Instruction	
Graduate	3
Chemical Engineering	
Undergraduate	2
Chemistry	
Graduate	12
Civil Engineering	
Undergraduate	3
Communicative Disorders	
Undergraduate	1

Fields of Study	International Student Enrollment
Computer Engineering Science Graduate	1
Computer Science Undergraduate	12
Economics Graduate	14
Undergraduate	1
Education Graduate	8
Education Non-Degree Graduate	3
Electrical Engineering Undergraduate	3
English Graduate	1
Undergraduate	1
English Non-Degree Graduate	1
Engineering Science/ Engineering Graduate	134
Family & Consumer Sciences Undergraduate	2
French Undergraduate	1
Geological Engineering Undergraduate	2
German Graduate	1
International Business Undergraduate	11
International Studies Undergraduate	5
Journalism Graduate	2
Undergraduate	4

Fields of Study	International Student Enrollment
Law	
Professional	1
Liberal Arts Undecided	
Undergraduate	2
Management	
Undergraduate	1
Management Finance	
Undergraduate	2
Marketing	
Undergraduate	1
Math	
Graduate	3
Undergraduate	1
Medicinal Chemistry	
Graduate	8
MIS	
Undergraduate	9
Music	
Graduate	1
Pharmacy Non-Degree	
Graduate	1
Pharmacy Administration	
Graduate	2
Pharmacy Science	
Graduate	11
Pharmacognosy	
Graduate	8
Pharmacology	
Graduate	4
Pharmaceutics	
Graduate	11
Physics	
Graduate	2

Fields of Study	International Student Enrollment
Political Science	
Graduate	3
Undergraduate	1
Psychology	
Graduate	1
Sociology	
Undergraduate	1
Southern Studies	
Graduate	1
Unknown Major	
Graduate	2
Undergraduate	16

VI. Economic Impact of International Students

International students make a significant economic contribution to the University, the State of Mississippi, and the United States as a whole, as shown in Table III.

Table III¹¹

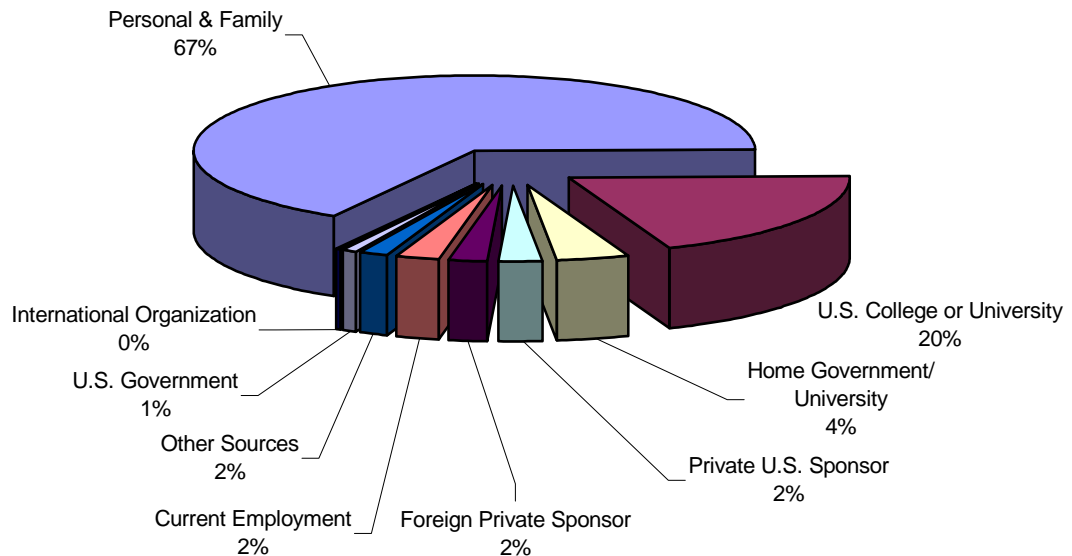
	Total International Students	Tuition & Fees*	Living Expenses*	Estimated Contribution to Economy
Mississippi	2,331	\$6,622.05	\$15,446.16	\$36,329,000
United States	547,867	\$11,036.09	\$16,518.61	\$11,046,000,000

*Average

About three-quarters of all international students in the United States receive their primary source of support from non-U.S. sources. This is shown by Chart VI.

Sources of Economic Support¹²

Chart VI



¹¹ Tuition, Fees, and Living Expenses compiled from information provided by NAFSA.

<http://www.nafsa.org>.

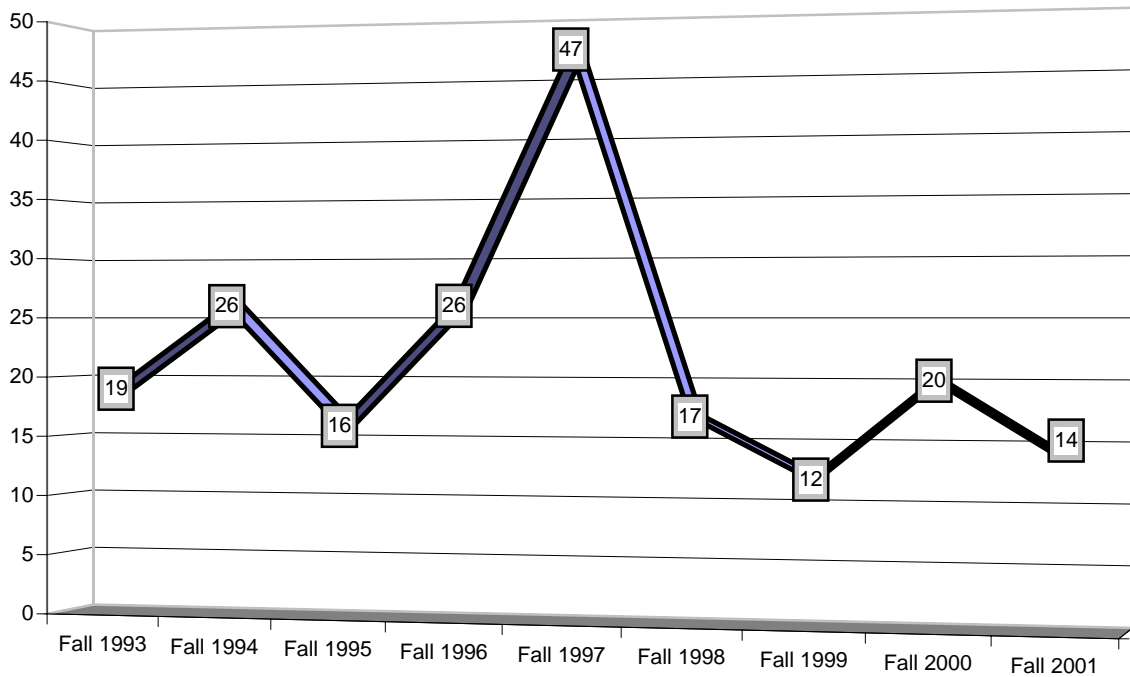
¹² IIE. Open Doors on the Web. <http://www.opendoorsweb.org/>

VII. Intensive English Program

The Intensive English Program (IEP) fall enrollment dropped from last year's numbers. However, the summer 2001 enrollment greatly increased in part due to recruitment efforts in Asia. It is hoped that IEP's academic year enrollment will rise with on-going recruitment in Asian and Latin America.

Intensive English Program
Eight-Year Trend

Chart VII



VIII. Region of Origin¹³

International Students at the University of Mississippi originated from 70 countries for the Fall Semester 2001. Table IV subdivides the world into 7 major regions. The total number of students from each region has been recorded. The University enrolled students from all world regions except Oceania as of Fall 2001. Chart VIII graphically depicts student enrollment percentages from the major regions.

International Enrollment by Region

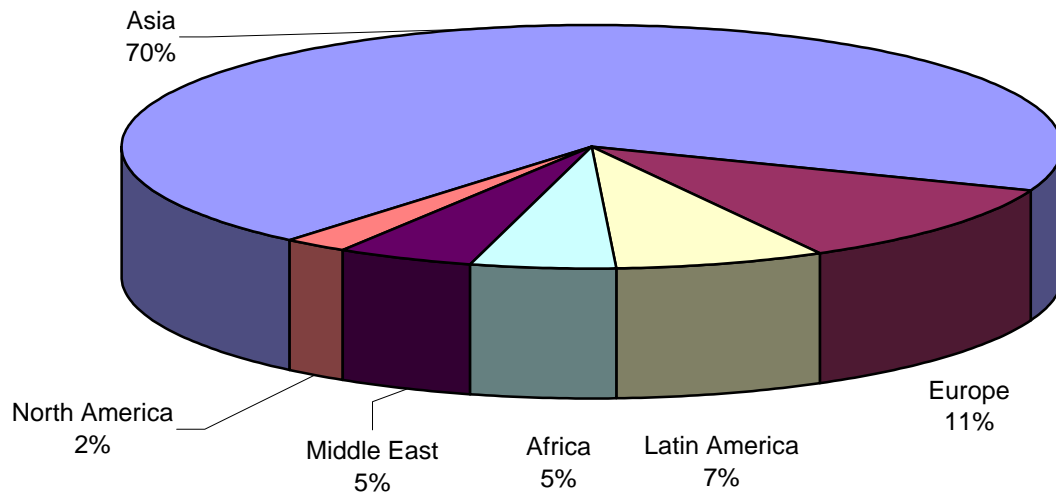
Table IV

Asia	285
Europe	45
Latin America	29
Africa	21
Middle East	19
North America (Canada)	9
Oceania	0

Enrollment by Regions of the World

Enrollment Percentages

Chart VIII



¹³ Administrative Information Services.

IX. Enrollment Breakdown by Country

A. Top Ten Countries by Enrollment: Table V lists the ten countries that have the highest number of students at the University of Mississippi.

Table V

1. India	108
2. China P.R.	95
3. Korea, Republic of	18
4. Nepal	15
5. Malaysia	14
6. Japan	13
7. Canada	9
8. Russia	7
9. Brazil, Dominica, Germany, Taiwan*	6

*Tie

Asian students make up 55% of all US international enrollments, while making up 70% of all University of Mississippi enrollments.

India overtook China this year as the number one inflow country at the University of Mississippi. Part of the drop in the number of students coming from China (8) may be attributable to the difficulty many Chinese students have experienced in obtaining visas to travel to the U.S. *China is the leading country of origin of international students studying in the US, with India, Japan, and Korea each sending more than 40,000 students. Chinese and Indian enrollments strongly supported the overall increase in international student numbers. China's grew by 10% to just under 60,000 students while Indian enrollments jumped by 29% this year, to 54,600 students surpassing Japan as the second leading source of international students for the first time, having been the number one student sending country in past years.*

China's 59,939 students make up nearly 11% of all international students studying in the U.S. Chinese and Indian students represent more than 23% and 26% of all the international students attending the University of Mississippi from China and India respectively, nearly half of our international students.

Also of note is the continued strength of enrollments from Latin America, particularly those from Mexico (10,670) and the South American countries of Brazil (8,845), Colombia (6,765) and Venezuela (5,217). Latin American enrollments now exceed those from Western Europe by more than 10,000 students.¹⁴ Latin America makes up only 7% of all University of Mississippi international enrollments, with Western Europe making up 11% of the international student population.

¹⁴ IIE. National Press Club Washington, DC. November 13, 2001. Todd Davis Address at the National Press Club. <http://www.opendoorsweb.org/>

B. International Student Country of Origin

* Indicates enrollment from a country that was not represented last year.

Table VI

Country	Undergraduate	Graduate	Other	Total
Albania	1			1
Argentina	1			1
Armenia	2			2
*Azerbaijan	1			1
Bahamas	2			2
Bangladesh		2		2
*Belgium	2			2
Bosnia-Herzegovina		1		1
Brazil	3	3		6
Bulgaria	1			1
Byelarus	1			1
*Cameroon	1	1		2
Canada	3	6		9
Chile	1			1
China P.R.	5	84	4	93
(Hong Kong)	1	1		2
*Colombia	1	1		2
Costa Rica			1	1
*Denmark		1		1
Dominica	2	4		6
Ecuador		1		1
Egypt		5		5
France		1	1	2
Gambia	2			2
Germany	3	3		6
Ghana		2		2
India	3	105		108
Iran		1		1
*Iraq		1		1
*Israel		1		1
Jamaica	1			1
Japan	1	9	3	13
Jordan		1		1
Kazakhstan	1			1
Kenya	1	1		2
*Kyrgyzstan	2			2
Laos	1			1
Lebanon	1	1	1	3

Liberia		1		1
Lithuania		1		1
Malaysia	6	8		14
Mauritius		1		1
*Mexico		2		2
Nepal	11	4		15
Netherlands Antilles	2	1		3
Nigeria	2	1		3
*Pakistan	1			1
*Palestine		1		1
Peru		1		1
Portugal	1			1
Republic of Korea	9	7	2	18
Romania	1			1
Russia	5	2		7
Saudi Arabia	1	3	1	5
Singapore		1		1
South Africa	2			2
*Sri Lanka	1			1
Sweden	5			5
Switzerland		1		1
Syria		1		1
Taiwan		5	1	6
Thailand		4		4
Trinidad & Tobago	1			1
Turkey		5		5
Ukraine	3			3
United Kingdom	4			4
Venezuela	1	3		4
Vietnam-North	1			1
Yugoslavia		1		1
Zimbabwe		1		1

**International Faculty and Staff
The University of Mississippi
Fall 2001**

X. International Faculty and Staff statistics*

A. Visa Status: Visa status of international faculty and staff is shown in Table VII.

Table VII

J-1 scholars on UM IAP-66	69
J-1 scholars on USDA IAP-66**	1
J-1 scholars on Fulbright IAP-66	2
Other visas (A,B,TN,O,J-2)***	6
H status	30
Total	108
Permanent Residency applications in process	9
H applications in process	4
J applications in process	5

* Information as of November 2001

** There may be more USDA sponsored researchers. This number represents researchers who have checked in with the Office of International Programs. Check-in is not required.

*** There may be more people on-campus in TN status. Only those who have required the assistance of the Office of International Programs are included in this number.

B. International Faculty and Staff by Department

Department	J status	Other status	H status	Permanent Residency applications in process	H's in process	J's in process
Biology	1	1	1		1	
Business			2			
Chemistry	2					
Chemistry and Biochemistry	1					
Civil Engineering	2		1			
Computational Hydroscience	1					
Continuing Studies			1			
Croft	1					
Curriculum & Instruction			1			
Electrical Engineering			1	1		
Exercise Science			1			
Family and Consumer Science			1			
Geology	1					
Information Technology			3	1		
Law Library	1					1
Mathematics	1			1		
Medicinal Chemistry	12	1	2		1	3
MMRI	1					
Modern Languages	9		1	1		
Music			1		1	
NCCHE*	4	1	3	1		1
NCNPR**	23		5	3		
NCPA***	1	1	1	1	1	
Pharmacognosy	4	1				
Pharmacology	1					
Pharmacy	1					
Physics	2		2			
Political Science			1			
Psychology			1	1		
Study Abroad			1			
USDA	2					

* National Center for Computational Hydroscience and Engineering

** National Center for Natural Products Research

*** National Center for Physical Acoustics

C. International Faculty and Staff by Country

Country	J status	Other status	H status
Argentina	2		
Austria			1
Bangladesh	2		1
Belgium		1	
Bosnia-Herzegovina			1
Brazil	7		1
Cameroon	1		
Canada		1	2
Costa Rica	1		
Egypt	2		
Eritrea			1
France	3		2
Germany	5		1
Hungary	2		
India	13	2	3
Indonesia	1		
Israel			1
Japan	2		2
Moldova	1		
Nepal			1
Netherlands	1		
Nigeria	2		
Pakistan	1		
People's Republic of China	11	1	7
Portugal			1
Republic of Korea	2		
Russia		1	
Saudi Arabia			1
South Africa	2		1
Spain	1		
Sri Lanka	1		
Turkey	3		2
Ukraine	1		1
United Kingdom	4	1	1
Uruguay	1		